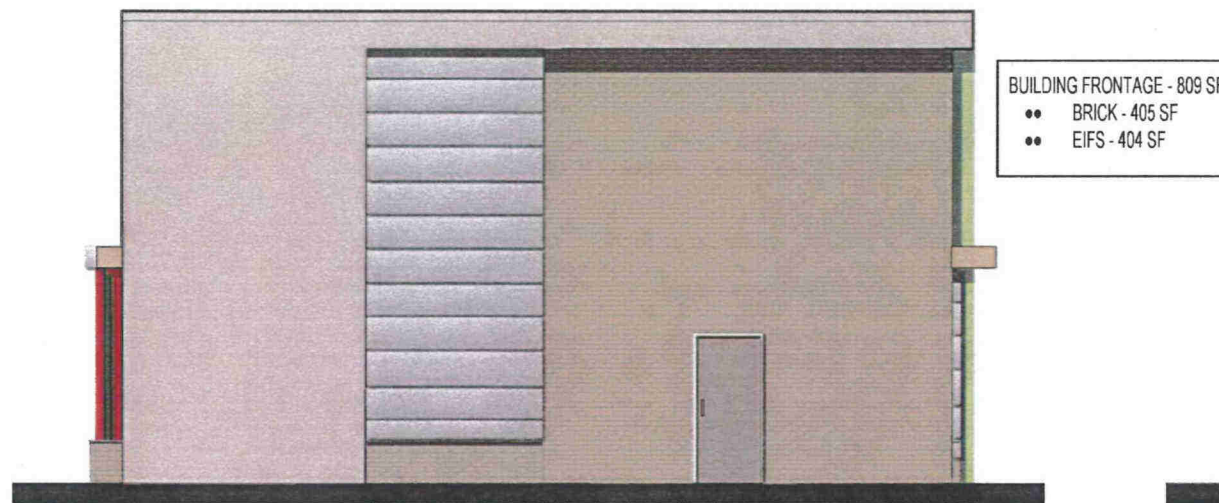


- TOTALS - 4385 SF
- GLAZING - 1060 SF (24%)
 - APOLIC PANEL - 582 SF (13%)
 - BRICK - 1184 SF (27%)
 - EIFS - 1126 SF (26%)
 - TILE - 436 SF (10%)



- BUILDING FRONTAGE - 1385 SF
- GLAZING - 486 SF
 - APOLIC PANEL - 426 SF
 - BRICK - 78 SF
 - EIFS - 111 SF
 - TILE - 284

EAST ELEVATION



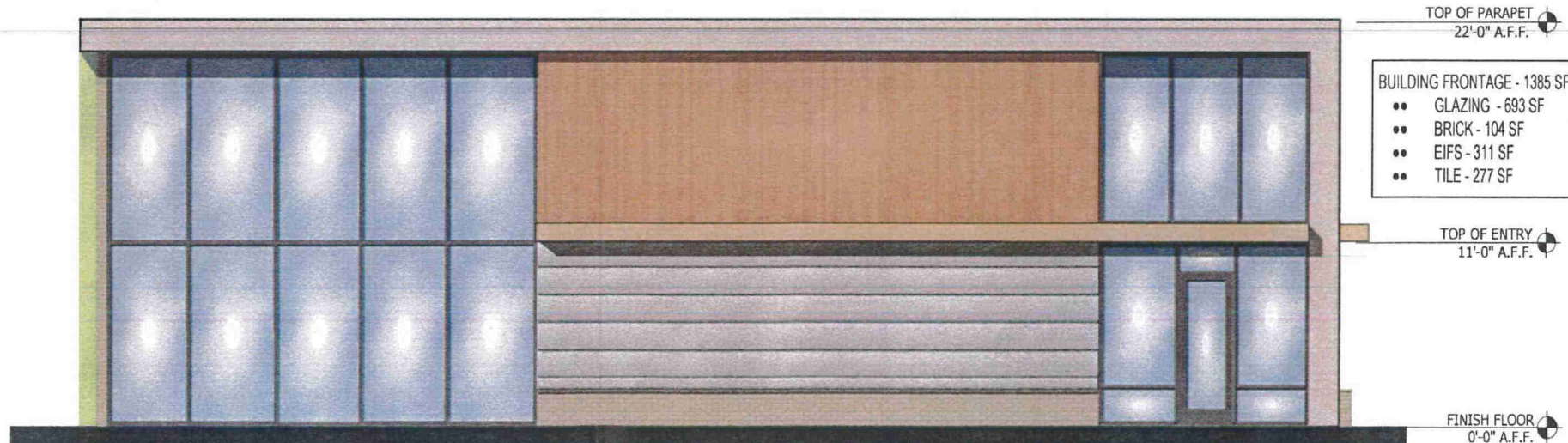
- BUILDING FRONTAGE - 809 SF
- BRICK - 405 SF
 - EIFS - 404 SF

SOUTH ELEVATION



- BUILDING FRONTAGE - 809 SF
- GLAZING - 271 SF
 - APOLIC PANEL - 156 SF
 - BRICK - 155 SF
 - EIFS - 98 SF
 - TILE - 129 SF

NORTH ELEVATION



- BUILDING FRONTAGE - 1385 SF
- GLAZING - 693 SF
 - BRICK - 104 SF
 - EIFS - 311 SF
 - TILE - 277 SF

WEST ELEVATION



PANDA RESTAURANT GROUP INC.
1683 Walnut Grove Ave.
Rosemead, California
91770
Telephone: 626.799.9898
Facsimile: 626.372.8288

All ideas, designs, arrangement and plans indicated or represented by this drawing are the property of Panda Express Inc. and were created for use on this specific project. None of these ideas, designs, arrangements or plans may be used by or disclosed to any person, firm, or corporation without the written permission of Panda Express Inc.

REVISIONS:

NO.	DESCRIPTION

ISSUE DATE:

NO.	DATE	DESCRIPTION

DRAWN BY: AO

PANDA PROJECT #: S8-14-D3778

ARCH PROJECT #: PE 1303



PANDA EXPRESS

941 RIDGEWALK PKWY, OUT PARCEL #2
WOODSTOCK, GA. 30188

BRIGHT AND FRESH - MEDIUM

A-200

EXTERIOR
ELEVATIONS