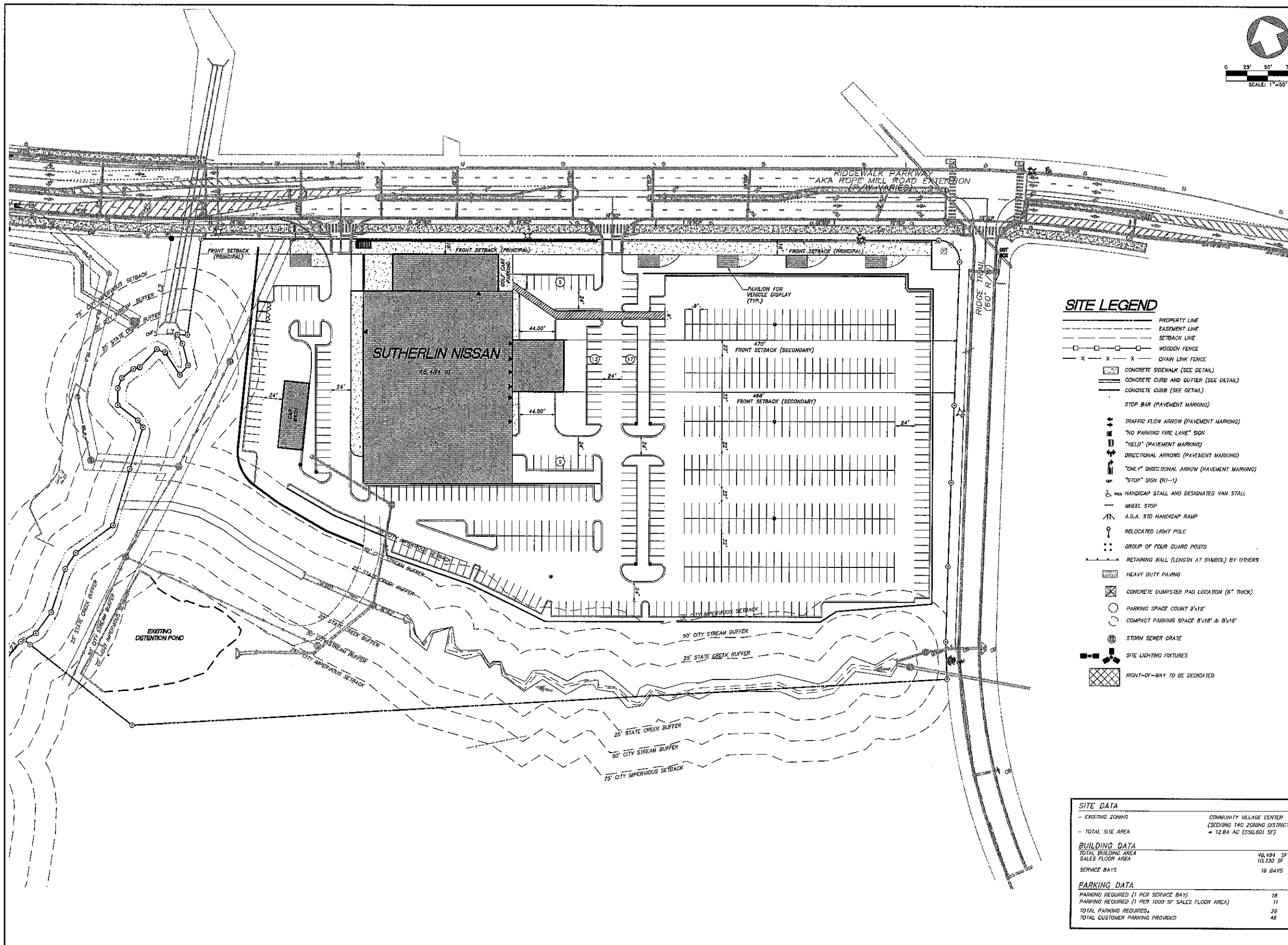
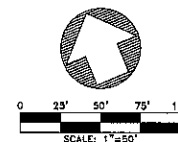


REVISIONS



**SITE LEGEND**

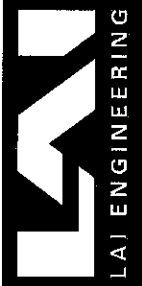
- PROPERTY LINE
- - - EASEMENT LINE
- - - SETBACK LINE
- WOODEN FENCE
- X X X CHAIN LINK FENCE
- ▬ CONCRETE SIDEWALK (SEE DETAIL)
- ▬ CONCRETE CURB AND GUTTER (SEE DETAIL)
- ▬ CONCRETE CURB (SEE DETAIL)
- STOP BAR (PAVEMENT MARKING)
- TRAFFIC FLOW ARROW (PAVEMENT MARKING)
- NO PARKING FIRE LANE SIGN
- YIELD (PAVEMENT MARKING)
- DIRECTIONAL ARROWS (PAVEMENT MARKING)
- ONLY DIRECTIONAL ARROW (PAVEMENT MARKING)
- STOP SIGN (R1-1)
- ♿ HANDICAP STALL AND DESIGNATED VAN STALL
- WHEEL STOP
- A.D.A. STD HANDICAP RAMP
- RELOCATED LIGHT POLE
- GROUP OF FOUR GUARD POSTS
- RETAINING WALL (LENGTH AT SYMBOL) BY OTHERS
- HEAVY DUTY PAVING
- CONCRETE DUMPSTER PAD LOCATION (6" THICK)
- PARKING SPACE COUNT 9'x18'
- COMPACT PARKING SPACE 8'x18' & 9'x16'
- STORM SEWER GRATE
- SITE LIGHTING FIXTURES
- RIGHT-OF-WAY TO BE DEDICATED

| SITE DATA   |  |
|---|--|
| EXISTING ZONING                                   | COMMUNITY VILLAGE CENTER<br>(SEEKING TPO ZONING DISTRICT)<br>= 12.64 AC (550,801 SF) |
| TOTAL SITE AREA                                   |  |
| BUILDING DATA                                     |  |
| TOTAL BUILDING AREA                               | 16,484 SF  |
| SALES FLOOR AREA                                  | 10,330 SF  |
| SERVICE BAYS                                      | 18 BAYS  |
| PARKING DATA                                      |  |
| PARKING REQUIRED (1 PER SERVICE BAY)              | 18   |
| PARKING REQUIRED (1 PER 1000 SF SALES FLOOR AREA) | 11   |
| TOTAL PARKING REQUIRED                            | 29   |
| TOTAL CUSTOMER PARKING PROVIDED                   | 48   |

SUTHERLIN NISSAN  
PREPARED FOR  
SUTHERLIN AUTOMOTIVE GROUP

WOODSTOCK, GA

PARKWAY CENTER  
1800 PARKWAY PLACE  
SUITE 720  
MARIETTA, GA 30067  
PHONE: 770-423-0807  
FAX: 770-423-1262  
WWW.LAJENGINEERING.COM



JOB NO: 14011  
DWG NAME: 1401-PROJ

CONCEPT PLAN

SHEET:  
**1 of 1**

DATE: 04-02-2015

Copyright © 2015

APR 06 2015