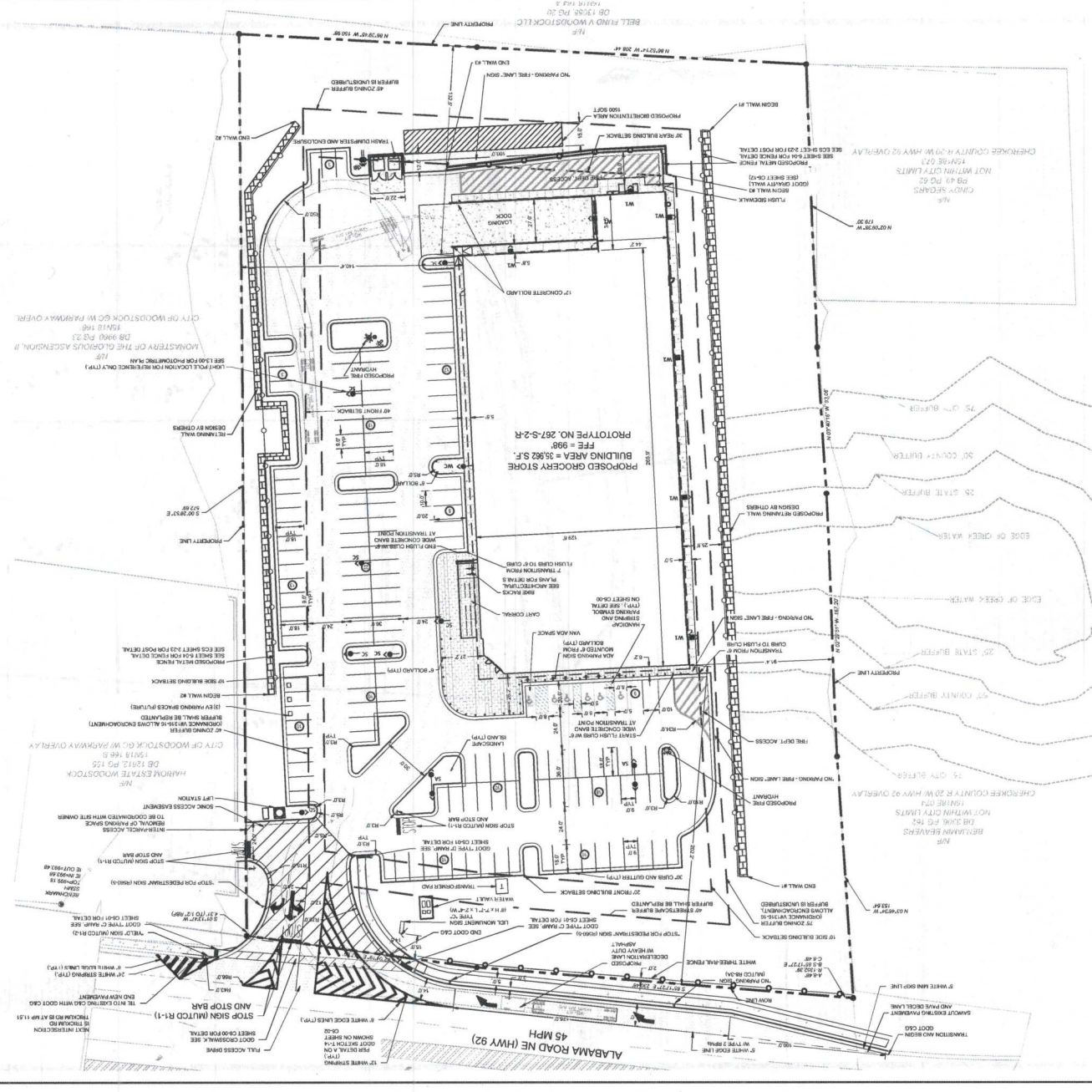


THIS DOCUMENT IS THE PROPERTY OF KIMLEY-HORN AND ASSOCIATES, INC. (KHA). IT IS TO BE USED ONLY FOR THE PROJECT AND SITE SPECIFICALLY IDENTIFIED HEREIN. NO PART OF THIS DOCUMENT IS TO BE REPRODUCED OR TRANSMITTED IN ANY FORM OR BY ANY MEANS, ELECTRONIC OR MECHANICAL, INCLUDING PHOTOCOPYING, RECORDING, OR BY ANY INFORMATION STORAGE AND RETRIEVAL SYSTEM, WITHOUT THE WRITTEN PERMISSION OF KIMLEY-HORN AND ASSOCIATES, INC.



PROJECT NO. 119956 HWY 92, WOODSTOCK GA  
 SHEET NUMBER C2-00  
 DATE 10/08/2016  
 PROJECT: WOODSTOCK (P000656)  
 SITE: 119956 HWY 92, WOODSTOCK GA  
 SITE PLAN

CLIENT: LIDL US OPERATIONS  
 8220 GREENSBORO DRIVE  
 MCKENNA, VA 22102

SCALE: 1" = 30'  
 DRAWN BY: KDC  
 CHECKED BY: KHA



**Kimley-Horn**  
 10 HOWELL STREET, SUITE 210  
 ALPHARETTA, GEORGIA 30009  
 PHONE (770) 813-3200  
 WWW.KIMLEY-HORN.COM

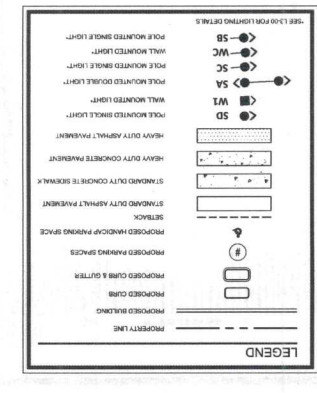
REVISIONS  
 NO. DATE BY

**GEORGIA**  
 Call before you dig

**SITE PLAN STATISTICS**

PROPOSED SURFACE	4.7% OF SITE AREA
APPROXIMATE AREA	4.7% OF SITE AREA
LANDSCAPE	4.7% OF SITE AREA
PERMANENT PAVING	103 SPACES (PARKING), 103 SPACES (HANDICAP SPACES)
PERMANENT IMPROVEMENTS	2.3 SPACES (HANDICAP SPACES) 17 SPACES (HANDICAP SPACES)
BUILDING AREA	35,582 S.F.
LIMITS OF DISTURBANCE	4.9 ACRES
PERMANENT PAVING	103 SPACES (PARKING), 103 SPACES (HANDICAP SPACES)
PERMANENT IMPROVEMENTS	2.3 SPACES (HANDICAP SPACES) 17 SPACES (HANDICAP SPACES)
BUILDING AREA	35,582 S.F.
LIMITS OF DISTURBANCE	4.9 ACRES
PROPOSED USE	GROCERY STORE
EXISTING USE	EMPTY LOT

- SITE NOTES**
1. ALL CONSTRUCTION SHALL BE IN ACCORDANCE WITH THE LATEST EDITIONS OF THE INTERNATIONAL BUILDING CODE (IBC) AND ALL APPLICABLE CODES AND REGULATIONS.
  2. ALL CONSTRUCTION SHALL BE IN ACCORDANCE WITH THE LATEST EDITIONS OF THE INTERNATIONAL BUILDING CODE (IBC) AND ALL APPLICABLE CODES AND REGULATIONS.
  3. THE CONTRACTOR SHALL VERIFY THE LOCATION AND DEPTH OF ALL UTILITIES PRIOR TO CONSTRUCTION.
  4. THE CONTRACTOR SHALL VERIFY THE LOCATION AND DEPTH OF ALL UTILITIES PRIOR TO CONSTRUCTION.
  5. THE CONTRACTOR SHALL VERIFY THE LOCATION AND DEPTH OF ALL UTILITIES PRIOR TO CONSTRUCTION.
  6. THE CONTRACTOR SHALL VERIFY THE LOCATION AND DEPTH OF ALL UTILITIES PRIOR TO CONSTRUCTION.
  7. THE CONTRACTOR SHALL VERIFY THE LOCATION AND DEPTH OF ALL UTILITIES PRIOR TO CONSTRUCTION.
  8. THE CONTRACTOR SHALL VERIFY THE LOCATION AND DEPTH OF ALL UTILITIES PRIOR TO CONSTRUCTION.
  9. THE CONTRACTOR SHALL VERIFY THE LOCATION AND DEPTH OF ALL UTILITIES PRIOR TO CONSTRUCTION.
  10. THE CONTRACTOR SHALL VERIFY THE LOCATION AND DEPTH OF ALL UTILITIES PRIOR TO CONSTRUCTION.
  11. CONSTRUCTION SHALL BE IN ACCORDANCE WITH THE LATEST EDITIONS OF THE INTERNATIONAL BUILDING CODE (IBC) AND ALL APPLICABLE CODES AND REGULATIONS.
  12. CONSTRUCTION SHALL BE IN ACCORDANCE WITH THE LATEST EDITIONS OF THE INTERNATIONAL BUILDING CODE (IBC) AND ALL APPLICABLE CODES AND REGULATIONS.
  13. ALL UTILITIES SHALL BE PROTECTED AND MAINTAINED THROUGHOUT CONSTRUCTION.
  14. SETBACKS SHALL BE MAINTAINED THROUGHOUT CONSTRUCTION.



**RECEIVED NOV 14 2016**