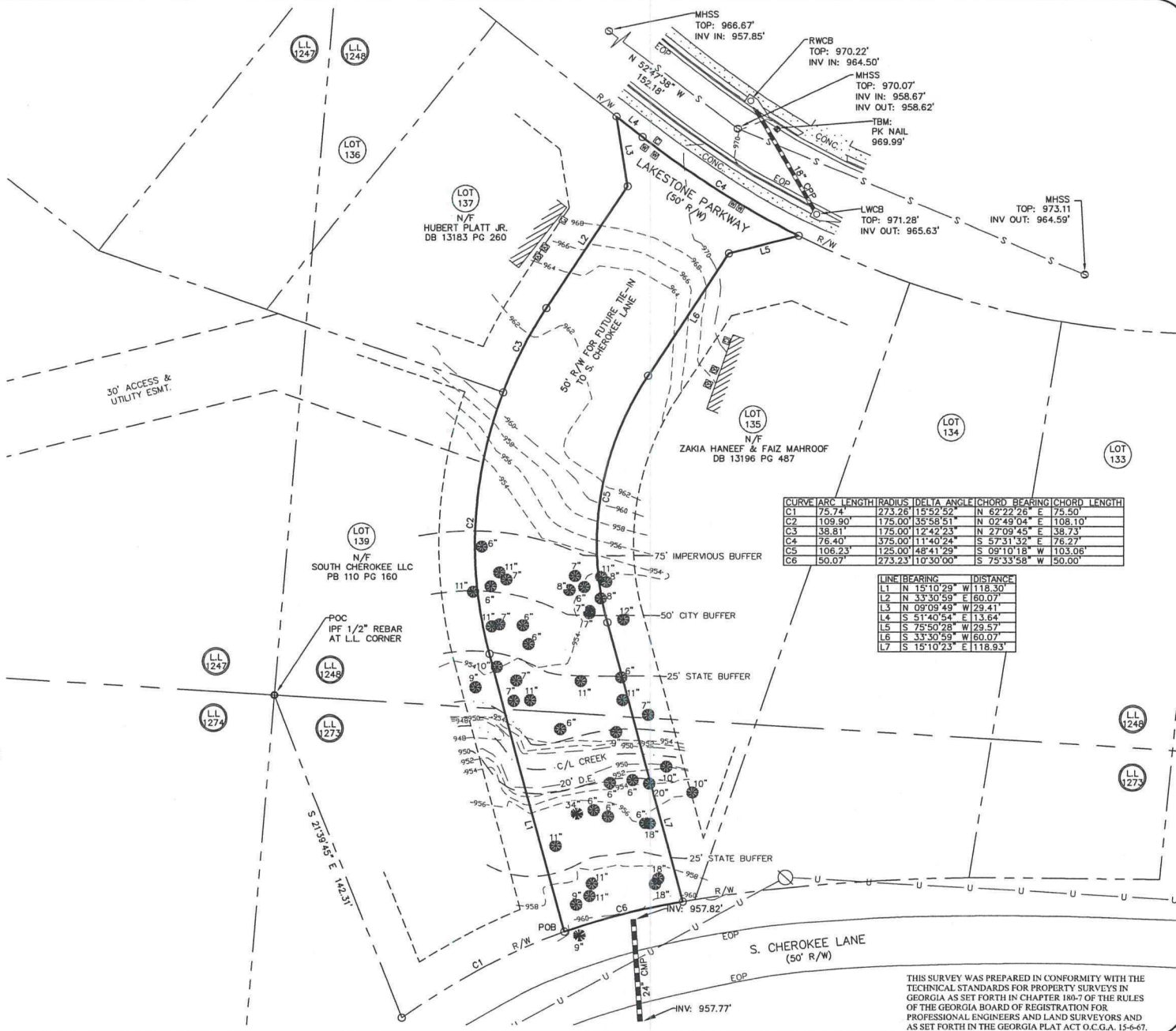


RECEIVED FEB 03 2017

- LEGEND:**
- PROPERTY CORNER FOUND (AS NOTED)
 - 1/2" REBAR WITH CAP SET LSF# 839
 - R/W MONUMENT
 - ▲ FIRE HYDRANT
 - ⊠ WATER METER
 - ⊞ WATER VALVE
 - ⊕ POWER POLE
 - ⊛ LIGHT POLE
 - ⊙ POWER/LIGHT POLE
 - ⊖ GUY WIRE
 - ⊠ POWER METER
 - ⊠ POWER BOX
 - ⊠ A/C UNIT
 - MANHOLE
 - CLEAN OUT
 - ⊙ JUNCTION BOX
 - ⊙ OUTFLOW STRUCTURE
 - ⊠ DRAINAGE INLET
 - ⊠ GAS METER
 - ⊠ GAS VALVE
 - ⊠ CABLE BOX
 - ⊠ TELEPHONE BOX
 - ⊠ TRAFFIC CONTROL BOX
 - ▲ SIGN
 - W- WATER LINE
 - U- OVERHEAD UTILITY LINE
 - S- SEWER LINE
 - G- GAS LINE
 - C- CABLE LINE
 - T- TELEPHONE LINE
 - X- FENCE LINE
 - 920- CONTOUR LINE
 - BSL BUILDING SETBACK LINE
 - CONC. CONCRETE
 - EOP EDGE OF PAVEMENT
 - L.L. LAND LOT
 - N/F NOW OR FORMERLY
 - R/W RIGHT-OF-WAY
 - P/L PROPERTY LINE
 - OH OVERHANG
 - C.B. CATCH BASIN
 - CNT CANTILEVER
 - H/C HANDICAP
 - FFE FINISHED FLOOR ELEVATION
 - BFE BASEMENT FLOOR ELEVATION
 - GFE GARAGE FLOOR ELEVATION
 - DB DEED BOOK
 - PB PLAT BOOK
 - C CONCRETE
 - P PORCH
 - R WOODEN RAMP
 - CTP CRIMP TOP PIPE
 - OTP OPEN TOP PIPE
 - PG PAGE
 - POB POINT OF BEGINNING
 - POC POINT OF COMMENCEMENT
 - NAD NORTH AMERICAN DATUM
 - NAVD NORTH AMERICAN VERTICAL DATUM
 - HARDWOOD TREE
 - PINE TREE



CURVE	ARC LENGTH	RADIUS	DELTA ANGLE	CHORD BEARING	CHORD LENGTH
C1	75.74'	273.26'	15°52'52"	N 62°22'26" E	75.50'
C2	109.90'	175.00'	35°58'51"	N 02°49'04" E	108.10'
C3	39.81'	175.00'	17°42'23"	N 27°09'45" E	38.73'
C4	76.40'	375.00'	11°40'24"	S 57°31'32" E	76.27'
C5	106.23'	125.00'	48°41'29"	S 09°10'18" W	103.06'
C6	50.07'	273.23'	10°30'00"	S 75°33'58" W	50.00'

LINE	BEARING	DISTANCE
L1	N 15°10'29" W	118.30'
L2	N 33°30'59" E	60.07'
L3	N 09°09'49" W	29.41'
L4	S 51°40'54" E	13.64'
L5	S 75°50'28" W	29.57'
L6	S 33°30'59" W	60.07'
L7	S 15°10'23" E	118.93'

GRID NORTH
 6 A WEST NAV 83
 DATUM: NAVD 88
 PER PB 97 PG 134
 SCALE: 1"=30'

BOUNDARY TOPOGRAPHIC & TREE SURVEY
 PREPARED FOR: AVIN PROPERTIES
 WEST END PARK SUBDIVISION
 LAND LOTS 1248 & 1273, 15TH DISTRICT, 2ND SECTION
 CHEROKEE COUNTY, GEORGIA - 000001/2016



FOR THE FIRM
 BOUNDARY ZONE, INC.
 LSF #839
 NOT VALID WITHOUT ORIGINAL SIGNATURE

THIS SURVEY WAS MADE WITHOUT THE BENEFIT OF A CURRENT TITLE COMMITMENT. EASEMENTS AND ENCUMBRANCES MAY EXIST WHICH BENEFIT AND BURDEN THIS PROPERTY.

THIS PLAT WAS PREPARED FOR THE EXCLUSIVE USE OF THE PERSON, PERSONS OR ENTITY NAMED HEREON AND DOES NOT EXTEND TO ANY UNNAMED PERSON WITHOUT A RECERTIFICATION BY THE SURVEYOR NAMING SAID PERSON.

© COPYRIGHT 2016 - BOUNDARY ZONE, INC.
 THIS DRAWING AND ITS REPRODUCTIONS ARE THE PROPERTY OF THE SURVEYOR AND MAY NOT BE REPRODUCED, PUBLISHED OR USED IN ANY WAY WITHOUT THE WRITTEN PERMISSION OF THIS SURVEYOR.

TOTAL AREA: 0.382 ACRES / 16,639 SQUARE FEET

BOUNDARY REFERENCE: PLAT BOOK 110, PAGE 160
 FIELDWORK PERFORMED ON 08/22/2016 & 08/23/2016

THIS MAP OR PLAT HAS BEEN CALCULATED FOR CLOSURE AND IS FOUND TO BE ACCURATE WITHIN ONE FOOT IN 115,172 FEET.

THIS PLAT HAS BEEN PREPARED USING A TRIMBLE 5603 ROBOTIC TOTAL STATION.

THE FIELD DATA UPON WHICH THIS PLAT IS BASED HAS A RELATIVE POSITIONAL ACCURACY OF 0.04 FEET.

BOUNDARY zone, inc. LAND SURVEYING SERVICES
 LANDSCAPE ARCHITECTURE
 LAND PLANNING

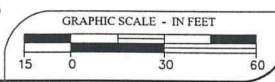
RL FORD
 4195 SOUTH LEE STREET, SUITE 1
 RUFORD, GEORGIA 30514

ATLANTA
 235 PEACHTREE STREET NE, SUITE 400
 ATLANTA, GEORGIA 30303

MARIETTA
 1070 THE EXCHANGE, SUITE 100
 MARIETTA, GA 30139

RALEIGH
 2285-C CANNON DRIVE, APEX
 NORTH CAROLINA 27523

SURVEYING LANDSCAPE ARCHITECTURE LAND PLANNING
 WWW.BOUNDARYZONE.COM (770) 271-5772 (919) 363-9226



PROJECT
 1674303

SHEET
 1 OF 1