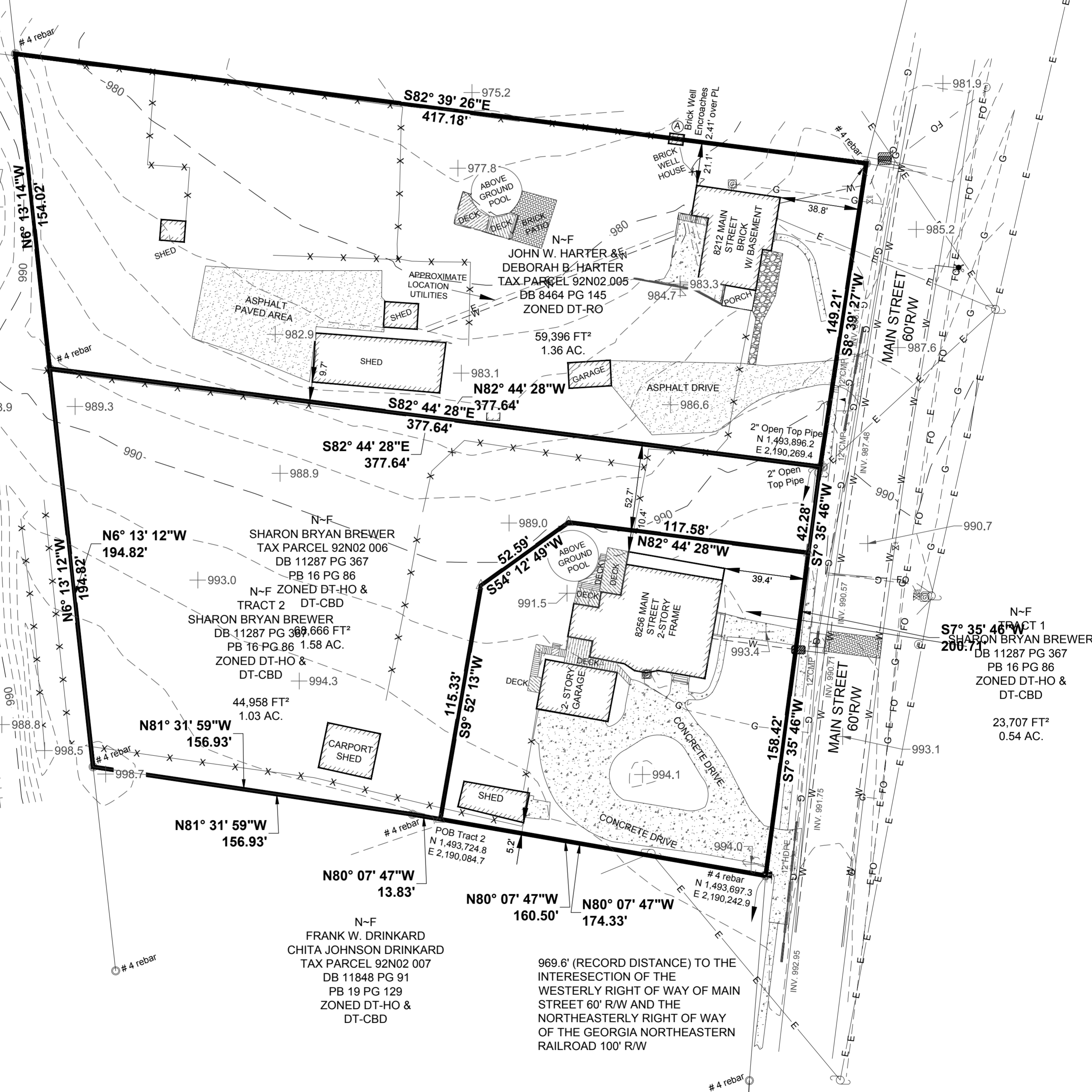


TOP 957.91 8" PVC
INV. IN 952.21
INV. OUT 951.71

N-F
MARJORIE H. HUBBARD
TAX PARCEL 92N02 004
DB 176 PG 490
ZONED DT-RO

GEORGIA NORTHEASTERN RAILROAD
100' R/W

GEORGIA NORTHEASTERN RAILROAD
100' R/W



N-F
SHARON BRYAN BREWER
TAX PARCEL 92N02 006
DB 11287 PG 367
PB 16 PG 86
N-F ZONED DT-HO &
TRACT 2 DT-CBD
SHARON BRYAN BREWER
DB 11287 PG 367
PB 16 PG 86 1.58 AC.
ZONED DT-HO &
DT-CBD
44,958 FT²
1.03 AC.
CARPORT
SHED
SHED
POB Tract 2
N 1,493,724.8
E 2,190,084.7
4 rebar
N81° 31' 59" W
156.93'
N81° 31' 59" W
156.93'
N80° 07' 47" W
13.83'
N80° 07' 47" W
160.50'
N80° 07' 47" W
174.33'
969.6' (RECORD DISTANCE) TO THE
INTERSECTION OF THE
WESTERLY RIGHT OF WAY OF MAIN
STREET 60' R/W AND THE
NORTHEASTERLY RIGHT OF WAY
OF THE GEORGIA NORTHEASTERN
RAILROAD 100' R/W

TOP 990.71 8" PVC
INV. IN 982.71
INV. OUT 982.91