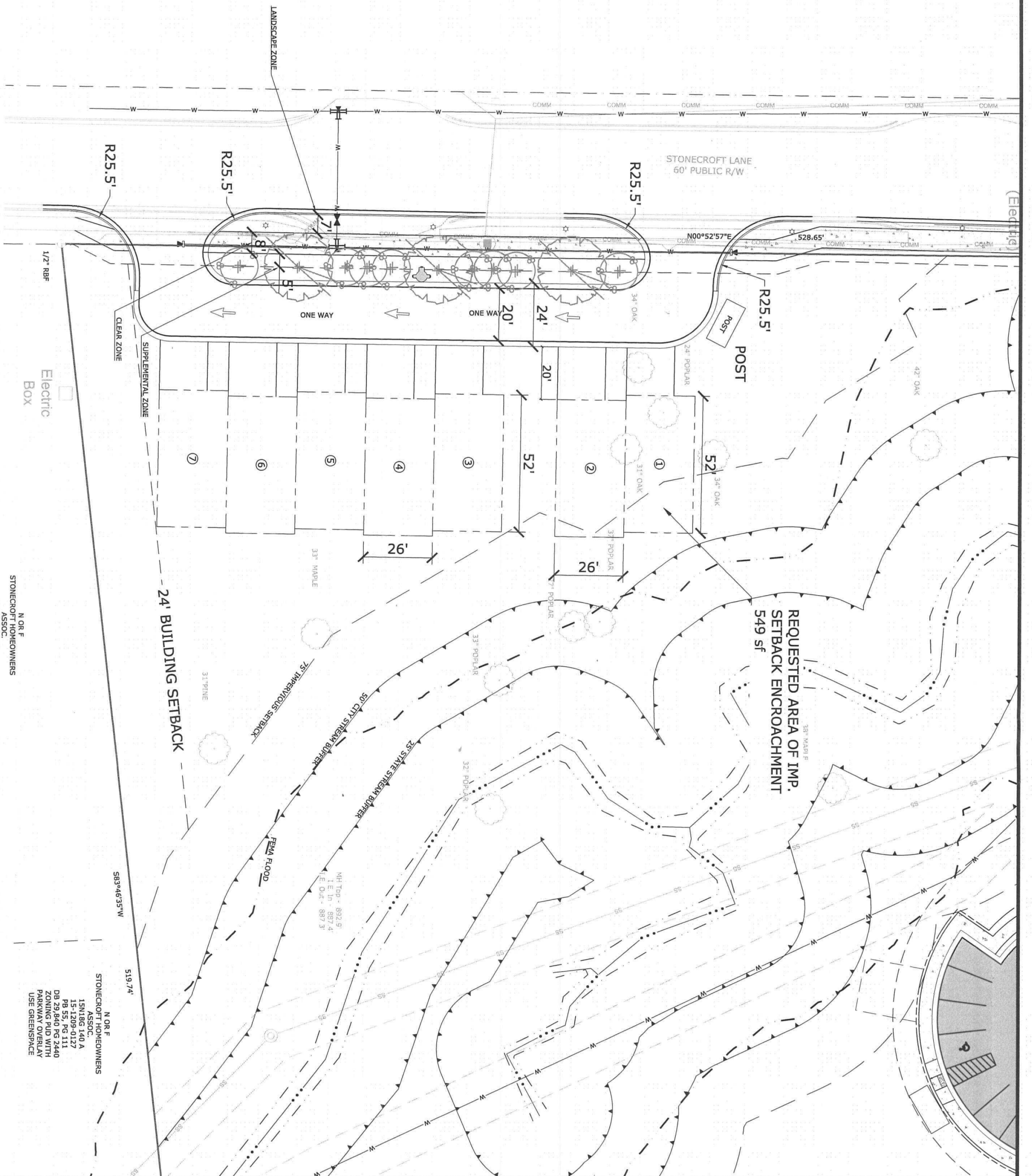


THE UTILITIES SHOWN HEREON ARE FOR THE CONTRACTOR'S CONVENIENCE ONLY. THERE MAY BE OTHER UTILITIES NOT SHOWN ON THESE PLANS. THE ENGINEER ASSUMES NO RESPONSIBILITY FOR THE LOCATIONS SHOWN AND IT SHALL BE THE CONTRACTOR'S RESPONSIBILITY TO VERIFY ALL UTILITIES WITHIN THE LIMITS OF THE WORK. ALL DAMAGE MADE TO EXISTING UTILITIES BY THE CONTRACTOR SHALL BE THE SOLE RESPONSIBILITY OF THE CONTRACTOR. IT IS THE OWNER/DEVELOPER'S RESPONSIBILITY TO VERIFY EXISTING UTILITY CAPACITY FROM TO MATCHING DESIGN. THE ENGINEER MAKES NO WARRANTIES, NEITHER EXPRESSED OR IMPLIED, REGARDING EXISTING UTILITY LOCATION, CAPACITY OR CONDITION.



STONECROTT HOMEOWNERS ASSOC.
15N18G 030 A
15-1209-0011
P9 53, P6 184
D9 27, P10 188
ZONING AND WITH PARKWAY OVERLAY USE GREENSPACE

STONECROTT HOMEOWNERS ASSOC.
15N18G 140 A
15-1209-0127
P9 53, P6 184
D9 27, P10 188
ZONING AND WITH PARKWAY OVERLAY USE GREENSPACE

STONECROTT HOMEOWNERS ASSOC.
15N18G 030 A
15-1209-0011
P9 53, P6 184
D9 27, P10 188
ZONING AND WITH PARKWAY OVERLAY USE GREENSPACE

STONECROTT HOMEOWNERS ASSOC.
15N18G 140 A
15-1209-0127
P9 53, P6 184
D9 27, P10 188
ZONING AND WITH PARKWAY OVERLAY USE GREENSPACE



© COPYRIGHT 2017 | SOUTHEASTERN ENGINEERING, INC. THIS DRAWING AND ITS REPRODUCTION ARE THE PROPERTY OF THE ENGINEER AND MAY NOT BE REPRODUCED, PUBLISHED OR USED IN ANY WAY WITHOUT THE WRITTEN PERMISSION OF THIS ENGINEER

ZONING SITE PLAN

STONECROTT AT HWY 92
PROJECT LOCATED AT:
LL. 1209 OF THE 15TH DISTRICT
10700 HIGHWAY 92, CITY OF WOODSTOCK
CHEROKEE COUNTY, GEORGIA

PROJECT OWNED/DEVELOPED BY:
VENTURE HOMES, INC.

1580 TERRELL MILL ROAD
MARIETTA, GA 30067
SEAN RANDALL 678-996-6598
24 HOUR CONTACT INFORMATION

No	ISSUED DESCRIPTION	DATE
#	#	#
#	#	#
#	#	#
#	#	#
#	#	#
#	#	#
#	#	#
#	#	#
#	#	#
#	#	#
#	#	#

SOUTHEASTERN ENGINEERING, INC.
2470 Sandy Plains Road Marietta, Georgia 30066
tel: 770-321-3936 fax: 770-321-3935
www.seengineering.com