

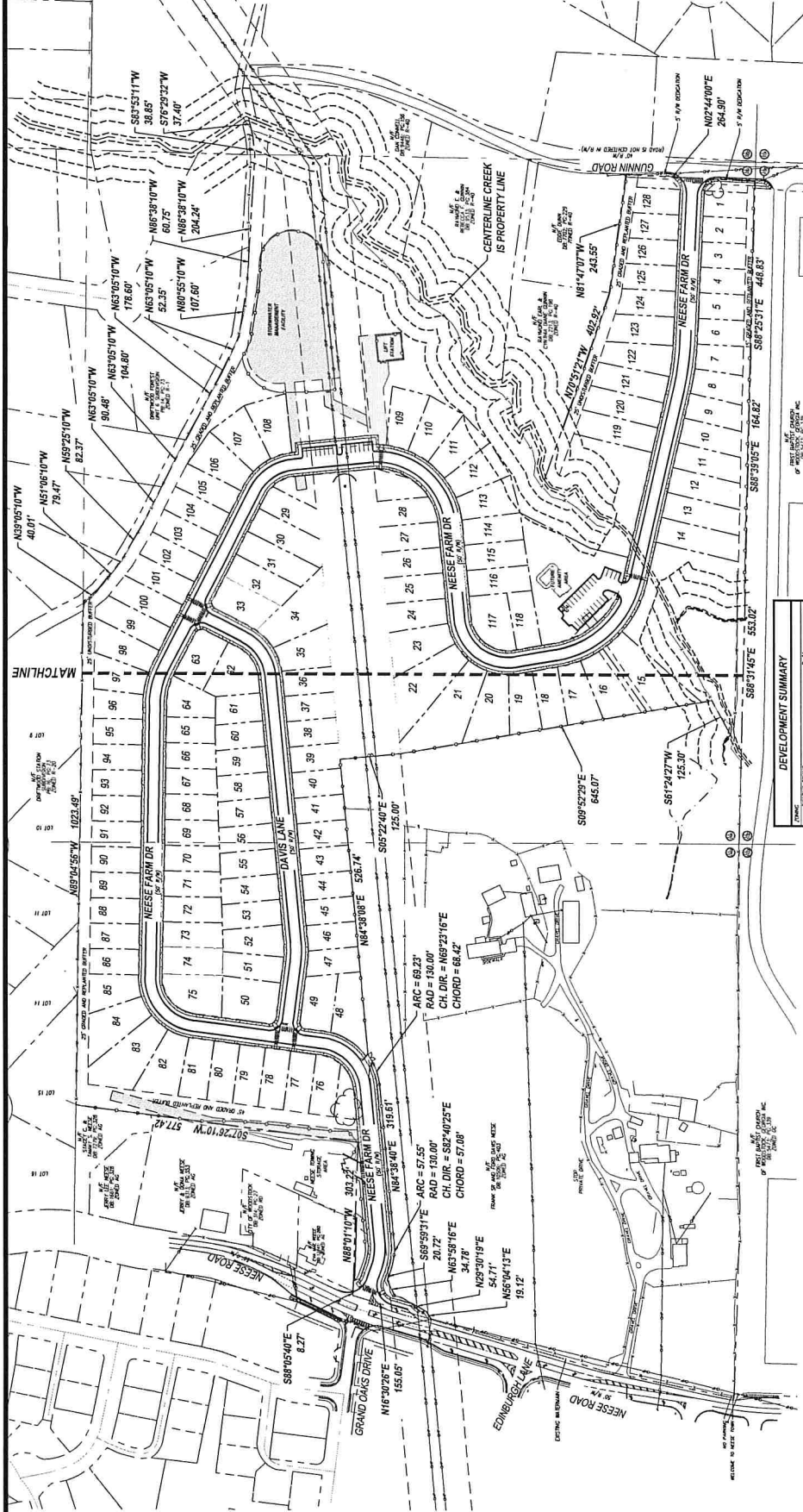
COSMIC CERTIFICATION NUMBER: 200523
EXPIRATION DATE: 06/01/2018



REVISIONS

1	REVISED PER COMMENTS
2	REVISED PER COMMENTS
3	REVISED PER COMMENTS
4	REVISED PER COMMENTS
5	REVISED PER COMMENTS
6	REVISED PER COMMENTS
7	REVISED PER COMMENTS
8	REVISED PER COMMENTS

C100
PRELIMINARY PLAT



PARCEL TABLE

LOT #	AREA
100	4.50684
101	4.50684
102	4.50684
103	4.50684
104	4.50684
105	4.50684
106	4.50684
107	4.50684
108	4.50684
109	4.50684
110	4.50684
111	4.50684
112	4.50684
113	4.50684
114	4.50684
115	4.50684
116	4.50684
117	4.50684
118	4.50684
119	4.50684
120	4.50684
121	4.50684
122	4.50684
123	4.50684
124	4.50684
125	4.50684
126	4.50684
127	4.50684
128	4.50684
129	4.50684
130	4.50684
131	4.50684
132	4.50684
133	4.50684
134	4.50684
135	4.50684
136	4.50684
137	4.50684
138	4.50684
139	4.50684
140	4.50684

ARC = 62.23°
CH. DIR. = N89°23'16" E
CHORD = 64.42'

ARC = 57.55°
CH. DIR. = N82°40'25" E
CHORD = 57.08'

ARC = 190.00°
CH. DIR. = N52°40'25" E
CHORD = 57.08'

ARC = 190.00°
CH. DIR. = N69°23'16" E
CHORD = 64.42'

GEORGIA811
Utilities Protection Center, Inc.
Know what's below. Call before you dig.
24 HOUR CONTACT: KEITH ADAMS 678.758.2089

TOTAL OPEN SPACE = 10.78 ACRES

RECEIVED DEC 06 2018