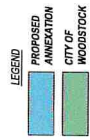


24 HOUR CONTACT:
JEFF SMITH
404.328.6280



NOTE:
1. ANNEXATION AREA ABUTS MUNICIPALITY BOUNDARY BY 101 FEET



RIDGE PLANNING AND ENGINEERING
1290 KENNEDY DRIVE, SUITE 100
MARIETTA, GA 30068
PHONE: 404.328.6280
FAX: 404.328.6280

CONSTRUCTION PLANS
LAND LOTS 918 & 955
15th DISTRICT, 2ND SECTION
CHEROKEE COUNTY, GEORGIA

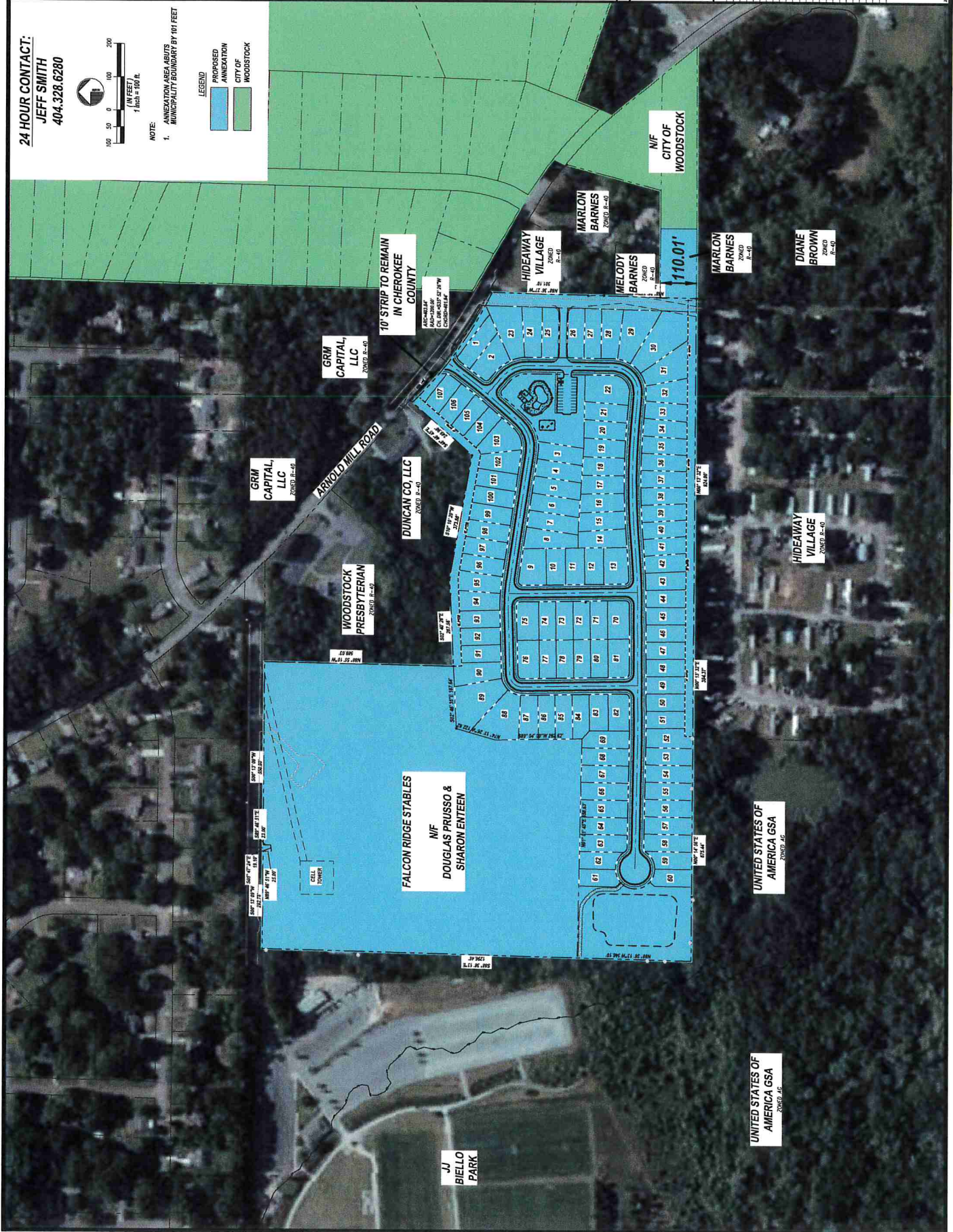
OWNER/DEVELOPER
DOSSY
1290 KENNEDY DRIVE
BLD A, SITE 200
MARIETTA, GA 30068
PHONE: 404.328.6280

DATE: 08/11/2021
DRAWING NO.: 2021-001

REVISIONS

ANNEXATION EXHIBIT
Z101

DATE: 08/11/2021



RECEIVED NOV 0 6 2020